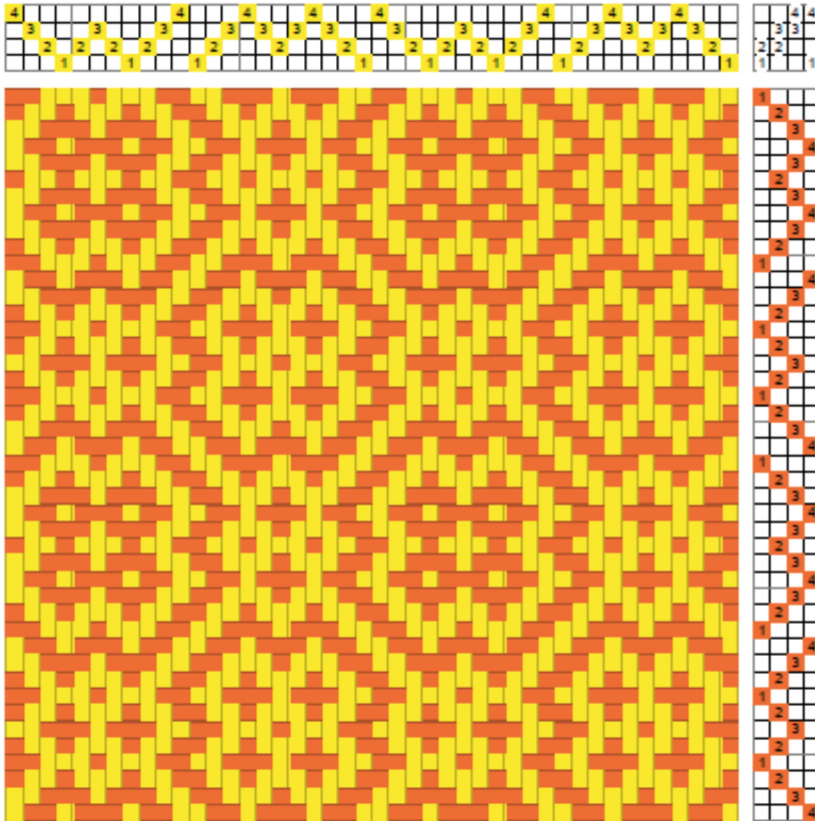


M's and W's Twill

M's and W's is a twill – not to be confused with M's and O's (see entry). I like to think of this as

an extended goose eye twill (see entry). An example of the drawdown is on the left and the fabric is below. The draft and sample are from as writ.

The sample is woven using a 10/2 mercerized cotton warp with 5/2 mercerized cotton weft. The difference in yarn size emphasizes the pattern.



There are variations of the treadling for this twill, for example the return treadling shown in the small drawdown below.

